

PRESS RELEASE

Grenchen, 31.10.2019

Dynamic Tibase® for Thommen Medical

Flexible and independent in the choice of attachment

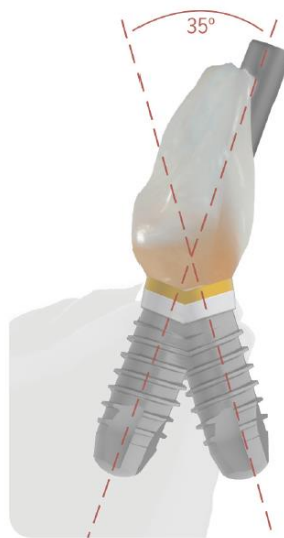
Don't let the implant axis determine your attachment options any more, decide for yourself. The newly on 1st November 2019 introduced Dynamic Tibase® is especially suitable for esthetically challenging screw-retained restorations. With the Dynamic Tibase® you can design the screw channel orientation to deviate up to 35° from the implant axis. Thus, you can also insert screwretained restorations in situations, which could previously only be treated with a cemented solution.

CAD/CAM libraries are available for the digital workflow. For this, please visit: www.thommenmedical.com

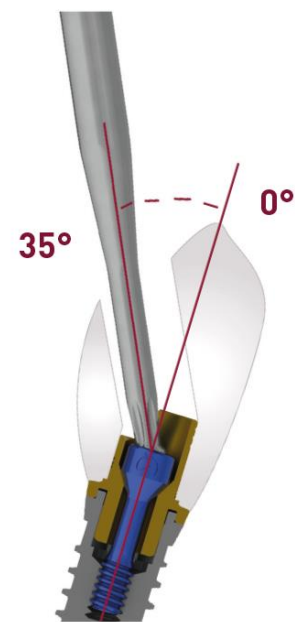
3shape  exocad  dental wings 



Bone situation



Ideal position



Solution
Dynamic Tibase®
Titanium alloy, anodized

Contact

Thommen Medical AG
Neckarsulmstrasse 28
CH-2540 Grenchen
Tel. +41 61 965 90 20
Fax +41 61 965 90 21
presse@thommenmedical.com
www.thommenmedical.com

The press release is also available online:

<http://www.thommenmedical.com>

About Thommen Medical

Thommen Medical is a Swiss designer and manufacturer of a dental implant system known for incredible precision and impactful design. We are unique with an incredible heritage of over 30 years of Swiss precision, innovation, and functional design that has formed the basis for our products. Of high quality yet simple to use, our products deliver predictable, aesthetic results without compromise. Thommen Medical's headquarters and private manufacturing facility are in Grenchen, Switzerland, a location that is the heart of Swiss precision manufacturing. Thommen Medical is an international company with subsidiaries and distributors throughout the world.