

ALL ON THOMMEN.

IMMEDIATE RESTORATION OF THE EDENTULOUS JAW.



...FOR EXCEPTIONAL RESULTS!

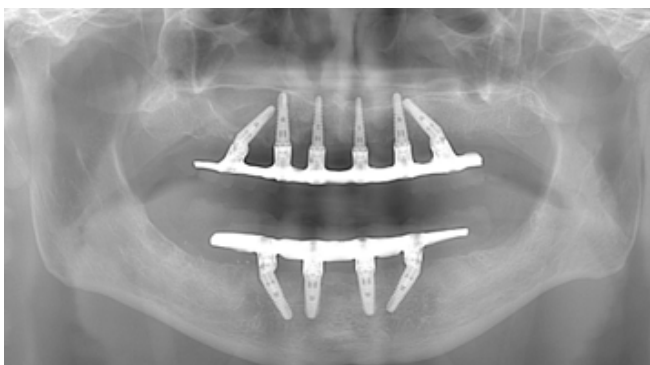
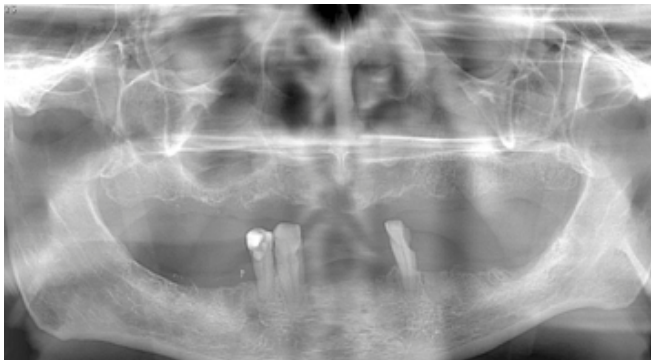
«DELIVERS SECURITY FOR IMMEDIATE LOADING – A HIGH LEVEL OF PRIMARY STABILITY COUPLED WITH OPTIMAL SOFT TISSUE INTEGRATION.»

DR. MARC HINZE, MUNICH-GRÄFELFING



The All on Thommen concept is an established treatment for the rehabilitation of the edentulous patient.¹ The Thommen Implant System, through its design and flexibility, is well suited to support this concept. The system satisfies key requirements for restoring function via immediate implantation and restoration:

- Provides excellent primary stability
- Offers additional security during the early healing phase
- Equipped with a range of user-friendly instruments
- Offers a variety of prosthetic options



Photographic material by Dr. Marc Hinze, Munich-Gräfelfing

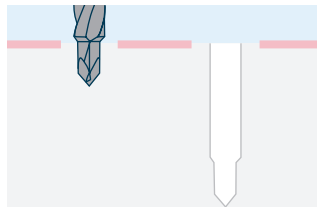
1 Malo et al., *Clinical Implant Dentistry and Related Research*. 7: S88-94. doi:10.1111/j.1708-8208.2005.tb00080.x

SOLID INTEGRATION....

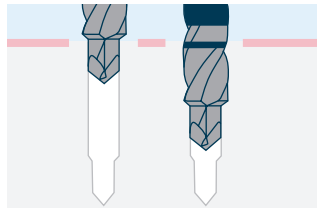
Excellent primary stability

Immediate restoration after implantation places high demands on the implant, affecting the primary stability and healing. Utilizing implants with self-tapping threads, along with the perfectly coordinated tips of the VECTODrill system, create a precise fit between the implant and bone cavity, therefore providing excellent primary stability.

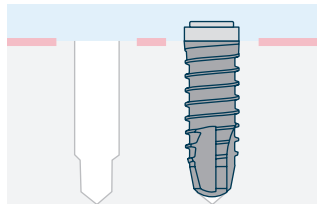
Pilot drilling



Sequential preparation



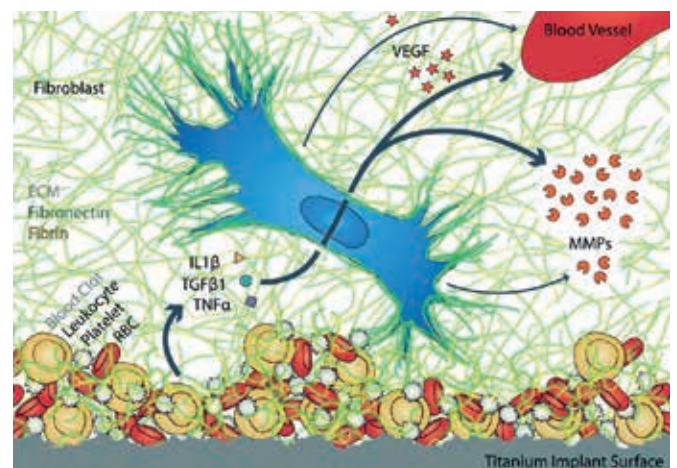
Self-tapping implant



Security in the early healing phase

The superhydrophilic INICELL® surface of the Thommen Implant is an important contributor to the faster healing and stability of the implant, even under stressful conditions. Clinical trials and pre-clinical studies have demonstrated that Thommen INICELL® Implants deliver a high level of implant stability and are capable of rapid osseointegration. The novel conditioning process creates optimal conditions for an increased physiological cellular response due to the superhydrophilic implant surface, allowing for faster bone regeneration and bone adhesion.

The results from the latest research illustrates that INICELL® promotes angiogenesis.²

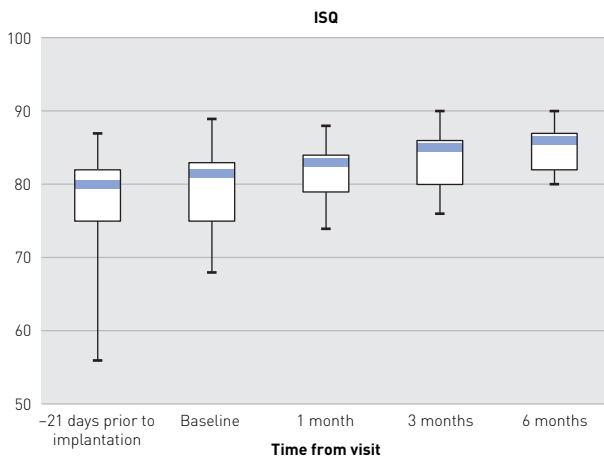


An illustration of the fibroblasts and blood clot adhering to the INICELL® conditioned titanium surface, synergistically upregulating the angiogenic potential and remodelling capacity.

2 Burkhardt et al., Nature Scientific Reports 2015 6:21071 | DOI: 10.1038/srep21071

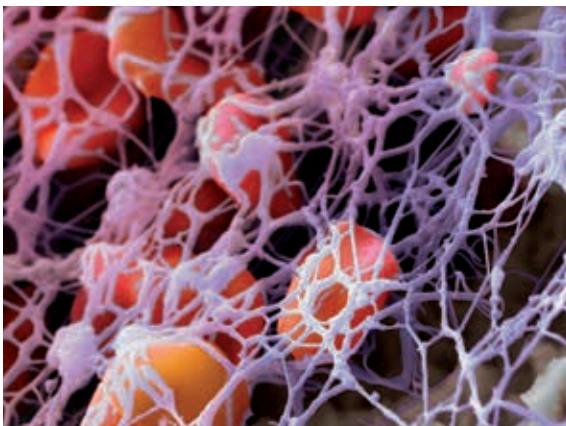
...EASY TO USE

Guidance... when you need it



Implant stability quotient (ISQ) values are measured from the day the implant is placed until 6 months after insertion.

Hicklin et. al Clin Oral Implants Res. 2016 Jul;27(7):875-83. doi: 10.1111/clr.12706.



Thorough planning for the placement of implants and the prosthetic restoration is especially important for the All on Thommen concept. Among the treatment planning options, 3D digital planning is possible with the systems that have integrated the Thommen library. For a current list of partners, please see our website: <http://www.thommenmedical.com/en/for-clinicians/prosthetic-digital-solutions/digital-solutions/planning-software.html>

Implant bed preparation using a template to guide the drill can be very helpful for the All on Thommen concept. Self-guiding VECTOdrills are optimally suited for this procedure. Paired with guide sleeves from Steco, greater precision can be achieved in implant bed preparation.



...FLEXIBILITY WITH PROSTHETIC RESTORATION

A user-friendly range of instruments

A surgical procedure and prosthetic restoration on the same day places great demands on the whole treatment team. Being able to quickly identify and pick up the instruments that you require during the procedure is essential. The efficient design of the Thommen Surgical Kit allows for the easy use of the instruments, simplifying the workflow. Some specialized instruments that are available include:

- The bone contouring instrument ensures the correct positioning of VARIOmulti abutments for angled implants.
- The insertion handle on the abutment or a positioning handle simplifies the try-in of angled abutments.
- Auxillary parts for temporary restorations and impression taking at the abutment level, depending on the functional requirements and aesthetic demands.

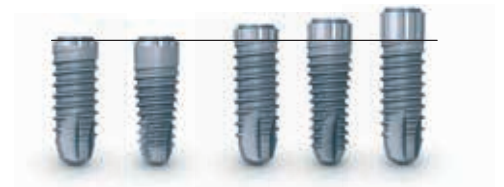


Restorations just as you want, just as you expect

Thommen Medical's VARIOmulti abutment is perfectly suited for the All on Thommen treatment concept for the restoration of edentulous cases.



VARIOmulti is available in different collar heights and angulations.



When paired with the **variety of collar heights** available for the CONTACT and ELEMENT implants, the Thommen Implant System provides a variety of options – the perfect match for every clinical situation.



As the VARIOmulti abutment is compatible with Nobel Biocare's multi-unit abutment, it can be used not just conventionally with original Thommen components, but also with CAD/CAM, e.g. with NobelProcera (registered trademarks of Nobel Biocare).

HEADQUARTERS

Thommen Medical AG
Neckarsulmstrasse 28
2540 Grenchen | Switzerland
Tel. +41 61 965 90 20
Fax +41 61 965 90 21
info@thommenmedical.com

SUBSIDIARIES/NATIONAL DISTRIBUTORS

AUSTRALIA/NEW ZEALAND

Osteon Medical
23/1866 Princess Highway
Clayton Victoria 3168 | Australia
Tel. (inside Australia): 1300 411 473
Tel. (outside Australia): +61 3 9264 0111
info@osteonmedical.com
www.osteonmedical.com

AUSTRIA

Thommen Medical Austria GmbH
Simmeringer Hauptstrasse 24
1110 Wien | Austria
Tel. +43 1 93026 3014
Fax +43 1 93026 3015
info@thommenmedical.at

BENELUX

Thommen Medical Benelux B.V.
Dierenriem 1
3738 TP Maartensdijk | Netherlands
Tel. +31 30 68 68 468
Info.benelux@thommenmedical.nl

CANADA

Thommen Medical Canada Inc.
1100 Burloak Dr. | Suite 300
Burlington, ON L7L 6B2 | Canada
Tel. +1 (905) 336 8966
+1 877 242 6012 (North America)
Fax +1 (905) 332 3007
+1 877 242 6013 (North America)
info@thommenmedical.ca

CHINA

Shanghai Yujing Trading Co., Ltd.
15F-G | Jia Fa Bldg. | No. 129 | Da Tian Rd.
Shanghai 200041 | China
Tel. +86 21 62723077
Fax +86 21 62175264

FINLAND

Vector Laboratories Oy
Engelinaukio 8 B
00150 Helsinki | Finland
Tel. +358 400 940 700
labs@vektor.fi

FRANCE

Thommen Medical France
10 avenue Gabriel Pierné
77680 Roissy-en-Brie | France
Tel. +33 1 83 64 06 35
Fax +33 3 89 33 52 53
infos@thommenmedical.fr

GERMANY

Thommen Medical Deutschland GmbH
Am Rathaus 2
79576 Weil am Rhein | Germany
Tel. +49 7621 422 58 30
Fax +49 7621 422 58 41
info@thommenmedical.de

HONG KONG

Shengyuan (Hong Kong) Int. Trade Co. Ltd.
Level 13, 68 Yee Wo Street
Causeway Bay | Hong Kong
Tel. +852 530 876 41

ITALY

Dental Trey S.r.l.
Via Partisani, 3
47016 Fiumana | Predappio (FC) | Italy
Tel. +39 0543 929111
Fax +39 0543 940659
implantologia@dental Trey.it
www.dental Trey.it

JAPAN

J. Morita Corporation
3-33-18, Tarumi-cho
Suita | Osaka 564-8650 | Japan
Tel. +81 6 6384 6921
Fax +81 6 6384 6746
www.morita.com

LITHUANIA/LATVIA

ČERNIKIS MEDICAL PROJECTS, UAB
Šiaurės prospektas 5B, Kaunas
Lithuania LT-49191
Tel. +370 37 201072
Mobile +370 65 771550
info@cmp.lt
www.cmp.lt

MIDDLE EAST

Star Science International GmbH
Jupiterstrasse 57
3015 Bern | Switzerland
Tel. +41 31 941 07 31
Fax +41 31 941 07 33
star.science@bluewin.ch

NORWAY

Novus Dental AS
Johannes Bruns gate 5
0452 Oslo | Norway
Tel. +47 951 07 007
post@novusdental.no
www.novusdental.no

POLAND

C.Witt Dental Sp. z o.o.
ul. Szosa Chetmińska 166
87-100 Toruń | Poland
Tel. +48 56 623 61 23
www.cwittdental.pl

RUSSIAN FEDERATION

CIS - JSC Geosoft
Build. 14, Ap. 16, 3-ya Mytishchinskaya ul.
Moscow, 129626 | Russian Federation
Tel. +7 495 663 22 11
thommenmedical@geosoft.ru

SINGAPORE

FONDACO Pte Ltd
7 Kaki Bukit Road 1, #03-06
Eunos Techno Link
Singapore 415937 | Singapore
Tel. +65 6392 2806
Fax +65 6392 1296
fondaco@fondacosg.com

SOUTH KOREA

APS Advanced Prosthetic Solution
201, Kolon Aston
505-14 Gasan-dong Geumchoen-gu
Seoul | South Korea
Tel. +82 2 3141 2875
Fax +82 2 3141 2877
www.apsdd.com

SPAIN/PORTUGAL

ISP Implante Suizo de Precisión
C/Los quintos n 1
03350 Cox (Alicante) | Spain
Tel. +34 96 536 1020
Fax +34 96 536 1188
isp@dentacare.es

SWITZERLAND

Thommen Medical AG
Neckarsulmstrasse 28
2540 Grenchen | Switzerland
Tel. +41 32 644 30 20
Fax +41 32 644 30 25
info@thommenmedical.ch

TAIWAN

Ting Sing Trading Co., Ltd.
No. 30 | Sec. 2 | Chang-An East Road
Taipei | Taiwan | R.O.C.
Tel. +886 2 25420968
Fax +886 2 25420969
www.tingsing.com.tw

TURKEY

Bioport Biyolojik Maddeler A.Ş.
Büyükdere cd. Subay evleri 9.Blok D1 Esentepe
Şişli 34394 İstanbul | Turkey
Tel. +90 212 2727577
Fax +90 212 2727628
info@bioport.com.tr
www.bioport.com.tr

USA

Thommen Medical USA L.L.C.
1375 Euclid Avenue | Suite 450
Cleveland OH 44115 | USA
Tel. +1 866 319 9800 (toll free)
Fax +1 216 583 9801
info.us@thommenmedical.com
orders.us@thommenmedical.com

