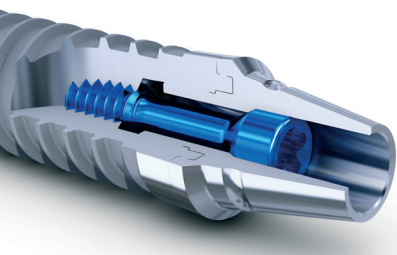


# ONE IMPLANT SYSTEM

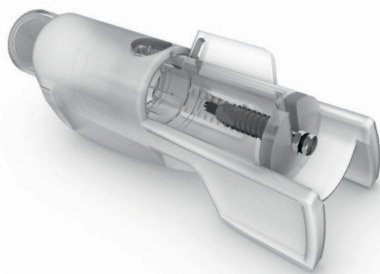


## MORE THAN 25 YEARS OF EXPERIENCE AND INNOVATION

- **Tried and trusted Thommen connection** fully compatible with all Thommen prosthetic components.
- **Unique stabilization ring** ensures mechanical stability.
- **High-strength abutment screw** makes it possible to have a narrow screw channel and ensures optimal prosthetic flexibility.
- **Conical screw seat of the abutment screw** prevents screw loosening.
- **Self-cutting thread** for excellent primary stability.
- **Superhydrophilic INICELL® surface** provides higher implant stability and safety in the early healing phase and greater flexibility during treatment. Chairside conditioning is quick and easy using the APLIQUIQ® conditioning system.

# TWO IMPLANT LINES

## DIFFERENT IMPLANT DESIGNS – A SINGLE SURGICAL PROCEDURE



reddot design award  
winner 2011



### SPI®ELEMENT

The parallel walled universal implant for all indications.



### SPI®CONTACT

The conical-cylindrical implant for extraction sockets and specific anatomical situations.

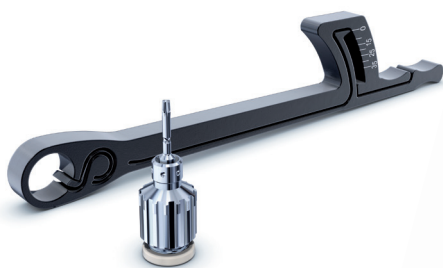
## ESSENTIAL INSTRUMENTS

### A single, well-designed surgical set is all you need

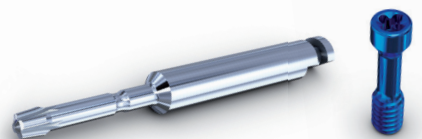
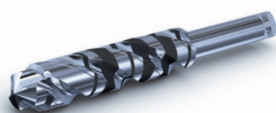
- Preparation of the implant bed with few drilling steps.
- Precise and safe drilling with the SPI®VECTOdrill™.

### Prosthetics with a single screwdriver

- Ergonomic design of the SPI®MONO torque ratchet.
- Minimal effort required for care and maintenance.



reddot design award  
winner 2007 – best of the best



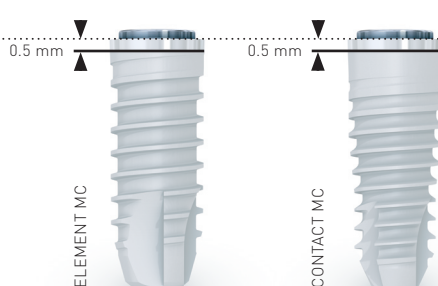
# THREE COLLAR HEIGHTS

## INDIVIDUAL SOFT TISSUE MANAGEMENT

### MC – Minimized Collar

A thin gingiva or limited vertical space for the prosthetic restoration often require a crestal implant position.

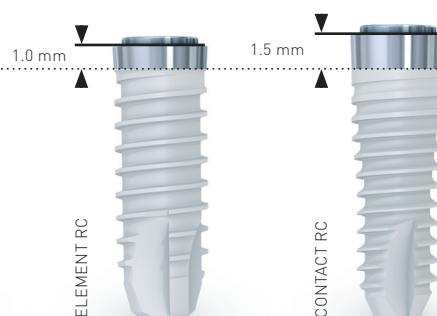
With MC implants, it is possible to achieve excellent esthetics, especially in the anterior region.



### RC – Regular Collar

The distance between the implant shoulder and bone helps to respect the biological structures.

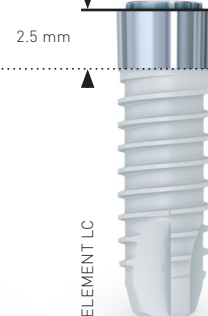
With RC implants, naturally esthetic results can easily be achieved.



### LC – Long Collar

In the case of the edentulous jaw, an irregular course of the gingival depth often requires a longer neck length.

LC implants are suitable for transgingival use in the case of restorations with hybrid prosthetics.

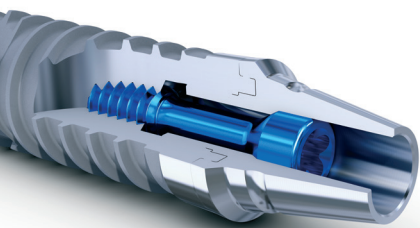


# THE THOMMEN IMPLANT SYSTEM

“AN EASY,  
WELL THOUGHT-OUT  
AND COMPLETE  
CONCEPT.”

DR. UELI GRUNDER,  
ZURICH-ZOLLIKON

## COMPLETE RESTORATIVE CHOICE THROUGH SUPERIOR PROSTHETIC DESIGN



### The narrowest screw channel

- Enables a fit in any space.
- For functional and aesthetic occlusion.

### A complete range

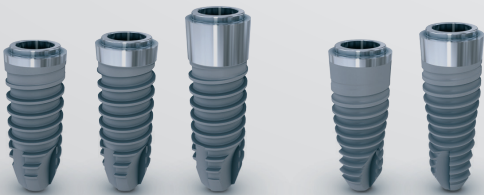
- Customizable gingiva former for ideal tissue aesthetics and for use as a temporary abutment in immediate restorations.
- Cost-effective solutions for standard situations.
- Standard and custom abutments for the restoration of conventional crowns and bridges.
- Full-ceramic abutments for the highest aesthetic requirements.
- Compatibility with leading CAD/CAM systems for individualized dental constructions and demanding implant prosthetics.



## INDIVIDUALIZED SOFT TISSUE SCULPTING FOR LASTING ESTHETICS

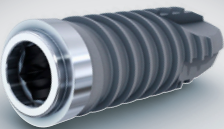
“BEST PREREQUISITES  
FOR OPTIMAL  
TISSUE INTEGRATION.”

DR. KONRAD MEYENBERG,  
ZURICH



**THOMMEN**  
Medical

# THE THOMMEN IMPLANT SYSTEM



“PERSUADINGLY  
EASY AND SAFE WITHOUT  
COMPROMISE.”

DR. OTTO ZUHR,  
MUNICH