

A Transmucosal Single-Stage Approach With Simultaneous Bone Regeneration in the Esthetic Zone



Dr. Mauro Merli, Italy
First published in:
Implantattherapie,
Mauro Merli,
Quintessence Publishing



The Baseline Situation

Patient with irreversibly damaged central incisor

A patient presented at the dental clinic with an irreversible damage at the maxillary left central incisor.



The Treatment Strategy



1. Tooth extraction

Tooth extraction with simultaneous epithelial-connective tissue grafting to prevent soft tissue collapse

Recording of a two-wall horizontal bone defect 2 months after extraction



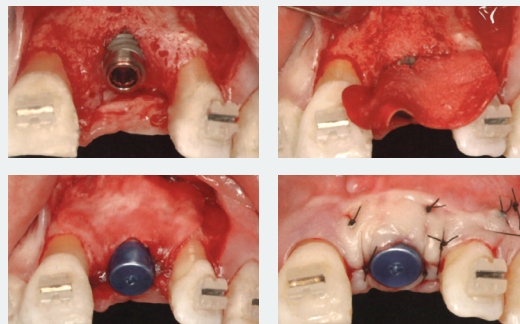
2. Implant placement with simultaneous bone regeneration

Placement of a SPI®ELEMENT RC implant PF 4.5

Application of a resorbable collagen barrier membrane

Covering of the bone graft with the membrane in «poncho» style around the healing abutment, followed by fixing with osteosynthesis pins on the buccal side

Suturing of peri-implant soft tissues around the healing abutment for a transmucosal healing approach



3. Restoration

Implant-supported provisional restoration 3 months after surgery

Restoration with definitive ceramic crown 1 year later



The Outcome

One year after surgery, CBCT imaging and a clinical evaluation revealed a good quality of bone regeneration around the maxillary left central incisor and a satisfactory esthetic result

