

# Case Report Series

## Extraction, Immediate Implantation, and Provisional Restoration With the Socket-Shield Technique



Dr. Mathias Geib,  
Germany  
[www.geib-nowak.de](http://www.geib-nowak.de)



### The Baseline Situation

Patient with traumatic complete crown fracture of tooth 22

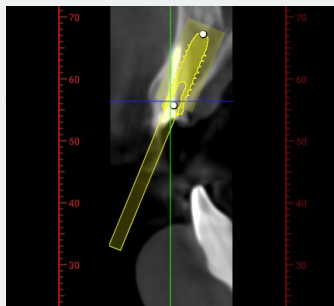
A 45-year-old male patient presented with no known systemic illnesses and good periodontal health. He has had missing teeth in regions 46 and 36 for many years and exhibited crowding in the anterior regions of both jaws. He was satisfied with his current dental esthetics and sought functional restoration of the missing teeth through implants; however, he recently experienced a traumatic complete crown fracture of tooth 22, which had previously undergone endodontic treatment elsewhere.



### The Treatment Strategy

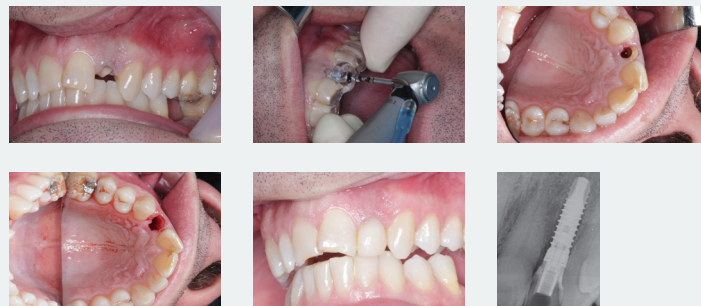


#### 1. Treatment plan



Extraction of tooth 22 and immediate implantation with provisional immediate restoration using the socket-shield technique to maintain the dento-alveolar and dento-gingival complex and preserve current esthetics

#### 2. Surgery with Socket Shield Technique and Provisional Restoration



Complete decrowning of tooth 22 and transdental implant bed preparation with guided pilot drilling

Preparation of a vestibular socket shield and removal of unnecessary tooth structure

Implantation with fixation of the socket shield using an ELEMENT RC INICELL® Implant (PF 3.5, L 12.5 mm)

#### 3. Final restoration

Final prosthetic restoration after 5 months with a screw-retained single tooth crown



### The Outcome

The treatment successfully preserved the existing esthetics and prevented volume loss of the dentogingival complex. The patient left the first appointment with a stable and esthetically pleasing provisional restoration. The treatment schedule was streamlined, consisting of the surgical procedure, followed by the final restoration appointment after 5 months

