



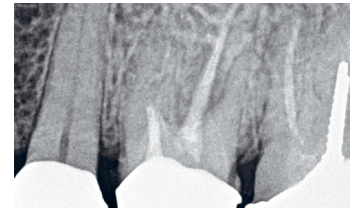
**Dr. Jevgenij Travkin,**  
Lithuania



### The Baseline Situation

Patient with periodontal issues affecting upper first molar

A 55-year-old female patient presented with periodontal issues affecting her upper first molar. She reported pain and mobility in the affected tooth. An X-ray examination revealed bone loss between the roots, and probing depths ranged from 6 to 7 mm.

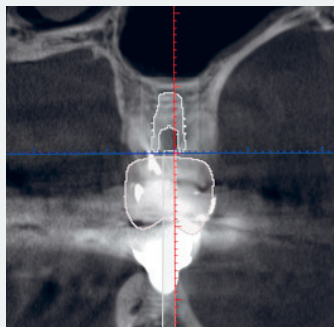


### The Treatment Strategy



#### 1. Planning

3D X-ray used to plan surgery with optimal implant positioning



#### 2. Immediate implant placement

Performed under local anesthesia

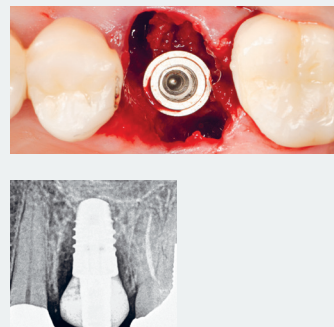
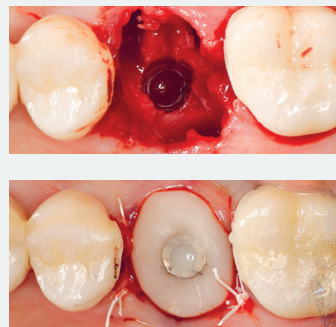
Immediate extraction of tooth 26 and immediate placement of an ELEMENT MC INICELL® implant (PF 5.0, L 8.0mm), torque value > 35Ncm

Use of temporary customizable abutment (VARIotemp & composite)

No use of grafting material

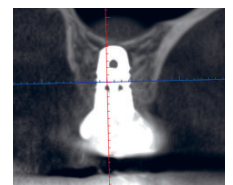
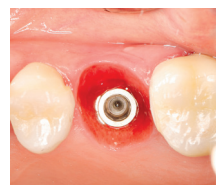
Stabilization of soft tissue with suturing technique

The patient did not feel any pain or swelling after surgery



#### 3. Final prosthetic restoration

Final restoration after successful osseointegration 3 months after implant placement



### The Outcome

The treatment with an immediate implantation approach resulted in perfect soft tissue condition, complete bone reconstruction, and full implant osseointegration