



Case Report Series

Implantation of NEVO Into a Healed Ridge for the Rehabilitation of Tooth 15



Dr. Florian Kläy,
Switzerland

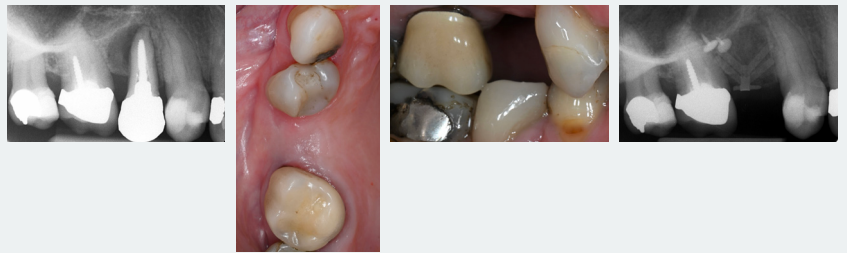
“NEVO provided a great feeling during insertion, with a straightforward drilling protocol and excellent primary stability”



The Baseline Situation

Patient with significant loss of tooth structure

A 71-year-old female patient presented with a longitudinal root fracture on tooth 15. She had no notable medical conditions, was a non-smoker, and showed no signs of periodontitis. Her bone type was particularly soft and classified as class 4 (Lekholm & Zarb 1985). Prior to the implantation process, the tooth was extracted and a two-stage guided bone regeneration procedure was performed.

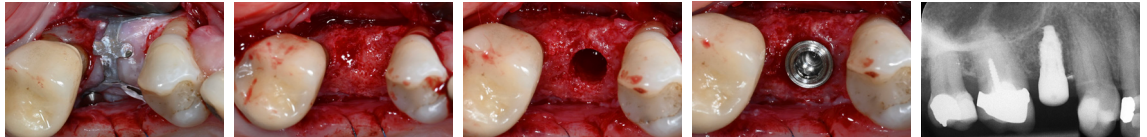


The Treatment Strategy



1 Type 4 implantation into healed ridge

9 months after extraction, epicrestal implantation of a NEVO RC INICELL® implant (PF 4.0, L 8 mm) into the healed ridge with an insertion torque of 27 Ncm



2 Prosthetic restoration

Taking of digital scan

Placement of final screw-retained crown 3.5 months after implantation



The Outcome

The procedure led to effective restoration of tooth 15, with healthy soft tissue surrounding the implant. X-ray assessments showed stable bone levels, indicating proper integration of the NEVO implant into the poor-quality bone.

