



# Case Report Series

## Fully Digital Mandibular Rehabilitation With NEVO in Type 1 Bone



Dr. Mathieu Rousset, France

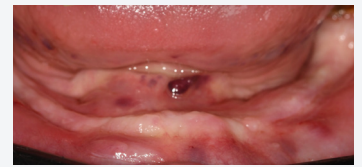
“This case demonstrates that the innovative design of NEVO is well-suited for cases involving high-density bone”



### The Baseline Situation

#### Patient with edentulous mandible

A 64-year-old male patient with a history of wearing a prosthesis in the completely edentulous mandible presented at the dental office seeking a fixed solution. The bone quality was classified as Type 1 (Lekholm & Zarb 1985), which can present challenges during implant placement due to its high density.

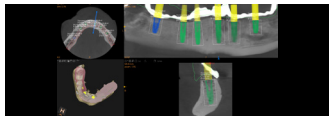


### The Treatment Strategy



#### 1 Preoperative Planning

Performance of dual scan followed by detailed planning phase\*



Design of a stackable surgical guide system consisting of the position guide, the base guide, and the drilling guide (RealGUIDE™)

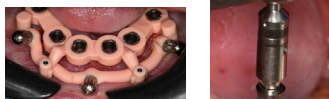


#### 2 Surgical Procedure

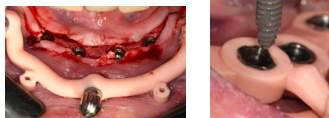
Stabilization of the base guide with three anchor pins (MIS)



Drilling of implant beds through the guide (Use of hard bone protocol – drilling with the final VECTODrill™ over the full implant body length)

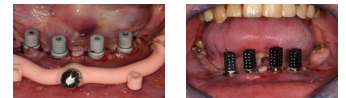


Insertion of 4 NEVO RC INICELL® implants through the guide

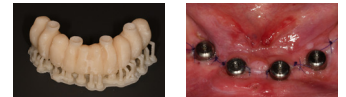


#### 3 Temporary Prosthetic Procedure

Performed immediately after surgery



Insertion of scan bodies and suturing of the flap to make an optical impression. Base guide was kept for the optical impression, allowing the dental technician precise repositioning



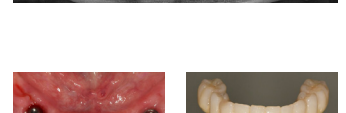
Additional photogrammetry to achieve the highest possible accuracy



Chairside printing of the temporary full arch bridge



Installation of temporary bridge 6 hours after surgery

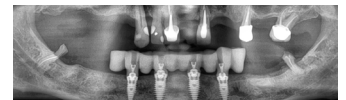


#### 4 Final Prosthetic Procedure

Final impression three months after surgery



Placement of final full-arch bridge



### The Outcome

The postoperative period progressed smoothly, with the patient showing excellent healing. Clinical and radiographic evaluations confirmed healthy soft tissues and stable bone levels around the implants



RC, regular collar

\*Planning was performed with ELEMENT implants due to limited availability of NEVO in the planning software ahead of its full market release. ELEMENT and NEVO implants share the exact same outer implant body contour.