

## Immediate Implant Placement and a Multilayer GBR Technique in the Esthetic Area



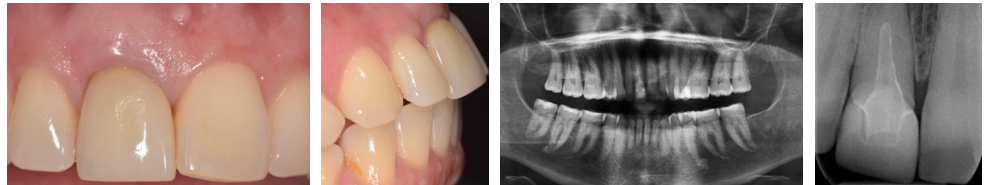
Dr. Mauro Merli,  
Italy



### The Baseline Situation

Patient with irreversible impairment of central incisor

A 51-year-old female patient presented with repeated abscesses on tooth 11 at the dental clinic. The clinical and 2D/3D radiographic diagnosis confirmed an irreversible impairment of the right central incisor due to decementation of the fiber post stump, root caries and an endodontic lesion that had transformed into an endo-perio lesion.



### The Treatment Strategy



#### 1 Immediate Implant placement

Immediate placement of an SPI®ELEMENT RC implant without simultaneous loading

Application of a deproteinized bovine bone matrix in the infrabony component of the defect

Application of a bilaminar connective tissue graft taken from the ipsilateral palate and anchored to the internal face of the flap. Simultaneous application of a platelet hemoconcentrates (CGF) membrane

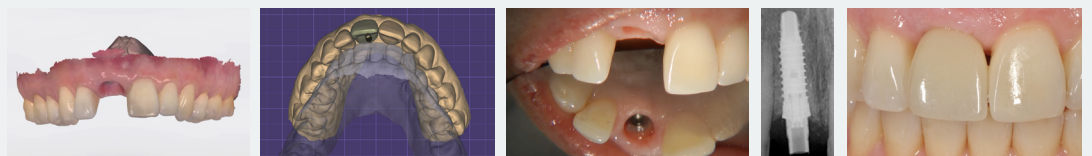
Usage of a Maryland bridge as temporary



#### 2 Definitive crown

After 6 months, application of the definitive crown in zirconia with a liquid ceramic surface

Use of a digital CAD/CAM protocol and a stereolithographic model



### The Outcome

The presented one-stage technique creates a multilayer barrier to enhance tissue regeneration.<sup>1</sup> After 2 years, the clinical evaluation shows convincing esthetics and the integration of the crown with the interproximal elements

